

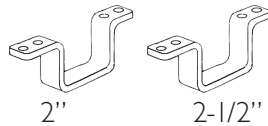
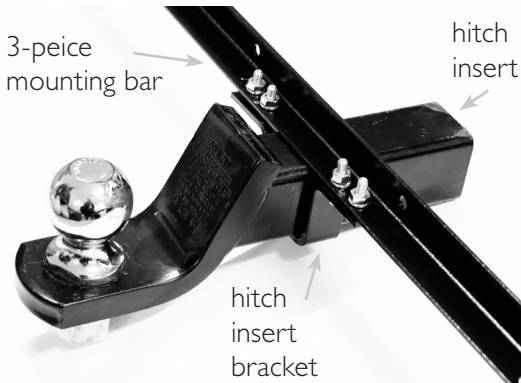
The hitch insert brackets can be used to mount the ULTRAGUARD to any 2" or 2 1/2" hitch. The bracket slips under the hitch insert, (the insert has the ball mounted to it) and using a three piece 70"x1"x1" steel angle assembly (included), the unit can be mounted to the hitch insert for easy removal and installation.

Components

- 2 - 70 x 16 Rubber Guard
- 2 - 27" Pre-Drilled Steel Angle End Support Bars
- 1 - 34" Pre-Drilled Steel Angle Center Support Bar
- 2 - Hitch Insert Brackets

Fasteners

- 16 - Fender washers
- 12 - 1/4"-20-1" Bolts
- 12 - 1/4" Nuts
- 4 - 5/16" by 1 1/2" Bolts
- 4 - 5/16" Split ring lock washers
- 4 - 5/16" Nuts
- 4 - 1/4" X 20 - 3/4" Bolts
- 4 - 1/4" Nylon insert Locknuts



Step 1

Using the 1/4" by 3/4" bolts and nylon insert locknuts assemble the three 1" x 1" steel angle bars as show in Fig. 1 to make a single 70" bar.

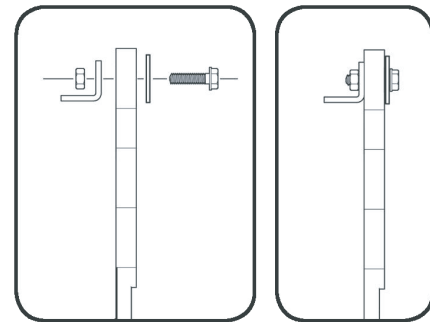
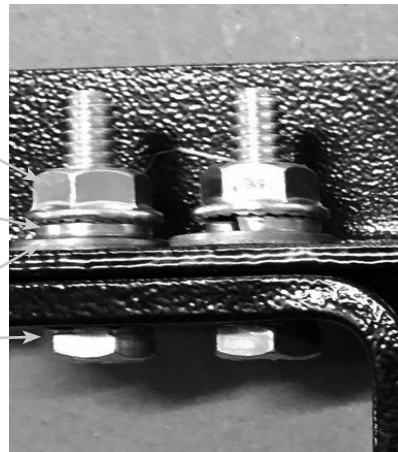
Note: Do no tighten hitch insert bracket prior to mounting on insert.



Fig. 1

Closeup Assembly:

- 5/16" Nut (make snug tight)
- 5/16" Split ring lock washer
- Washer
- 5/16" - 18 - 1-1/2" bolts



Side Assembly View: Installing the ULTRAGUARD guards to the support bar using the set of 12, 1/4"-20- 1" nuts, fender washers and bolts.

Step 2

Cutout top part of guard to fit around the hitch insert.

Step 3

- A.) Align the ULTRAGUARD with the Angle Support Bar.
- B.) Drill out the rubber at the mounting holes.
- C.) Attach the ULTRAGUARD guards to the angle support using the 1/4" - 20 - 1" nuts, bolts, and fender washers provided.

Step 4

Tighten hitch insert bracket into hitch insert and slide into receiver.